



SKÄRPVERKTYG AB

MAGNET & VAKUUMBORD



Innehåll

Artikel	Sida
Magnetbord för planslip	1-8
Magnetkula	9
Magnetblock	10
Vakuumbord	11

PERMANENT MAGNETIC CHUCK (POWERFUL TYPE)

MODEL:EDMT



APPLICATION:

Suitable for heavy and light grinding. It can also be used in liquid.

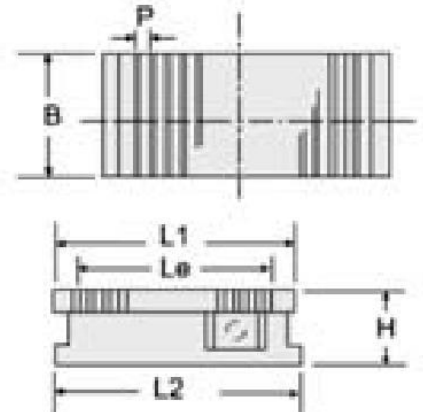
FEATURES

- 1.While turning magnetic force ON/OFF the flat face's accuracy of magnetic force surface doesn't change and can keep high precision processing surface.
- 2.Wide application to thin and thick work pieces.
- 3.Bras welding protects faceplate from coolant corrosion.
- 4.Water-proof property enables face plate & machine body to be used in liquid.
- 5.Attraction: 14kgf/cm²

25.4mm=1"

mm

MODEL	DIMENSION	CHUCKING FACE			POLE PITCH P	LENGTH L2	HEIGHT H	WEIGHT (kg)
		B	L1	Le				
EDMT-1018	100 ×175	100	175	125		187		7.3
EDMT-1325	125 ×250	125	250	200		262		10.4
EDMT-1530	150 ×300		300	456		312		17
EDMT-1535	150 ×350	150	350	196		362		20
EDMT-1545	150 ×450		450	396	11.2 (1.6+2+1.6+6)	462	63	25.6
EDMT-2040	200 ×400		400	346		412		26.0
EDMT-2045	200 ×450	200	450	390		462		30.1
EDMT-2050	200 ×500		500	446		512		35.7
EDMT-2550	250 ×500	250	500	446		512	60	39.0
EDMT-3060	300 ×600	300	600	525	3+15	630	90	90



SKÄRPVERKTYG AB

Tel: 031-87 00 50 Fax: 031-87 14 15

PERMANENT MAGNETIC CHUCK (MICRO-PITCH TYPE)

MODEL:EDTW



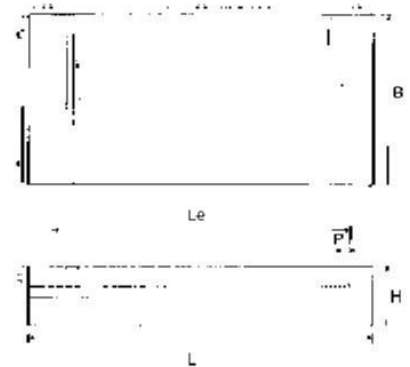
FEATURES

- 1.Thin and light weight to meet versatile Applications.
- 2.Fine-pitched magnetic poles on this Micropitch model, make it ideally suitable For small and thin workpieces.
- 3.Hexagonal wrench key is used for the magnetic ON/OFF changeover handle. It is inserted through the side, easily removed and operates quite lightly.
- 4.The chuck surface has a wider effective magnetic area than other chucks of similar type.

25.4mm=1"

mm

MODEL	DIMENSION	CHUCKING FACE			POLE PITCH	HEIGHT	WEIGHT
		B	L	Le	P	H	kg
EDTW-1018	100x175	100	175	140		52	7
EDTW-1325	125x250	125	250	210		57	13
EDTW-1515	150x150		150	115			9
EDTW-1530	150x300	150	300	258		63	22
EDTW-1535	150x350		350	308	2		25
EDTW-1545	150x450		450	408	(1+1)		32.5
EDTW-2040	200x400		400	358			38
EDTW-2045	200x450	200	450	408			42.5
EDTW-2050	200x500		500	458			45
EDTW-2550	250x500	250	500	458			60



PERMANENT MAGNETIC CHUCK (THIN AND CIRCULAR TYPE)

MODEL:EDTW-R



APPLICATION

Most suitable for grinding application. Specifically designed for workpieces with different thickness.

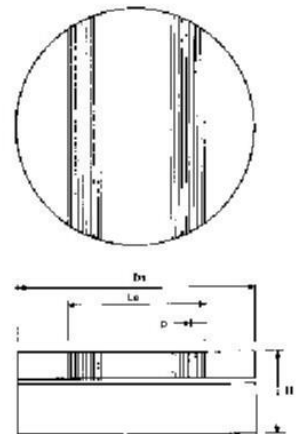
FEATURES

- 1.Thin and light for versatile applications.
- 2.The fine-pitched magnetic poles make it ideal for small and thin workpieces.
- 3.Hexagonal wrench key is used to switch the Magnetic force on and off. Easy to operate.

25.4mm=1"

mm

MODEL	DIAMETER	CHUCKING FACE		POLE PITCH	HEIGHT	WEIGHT
		D1	Le	P	H	
EDTW-100R	100	100	67	2 (1+1)	58	3.7kg
EDTW-125R	125	125	80			6.2kg
EDTW-160R	160	160	115			9.5kg
EDTW-200R	200	200	155			15.0kg
EDTW-250R	250	250	205		63	23.0kg
EDTW-300R	300	300	255			36.0kg
EDTW-360R	360	360	310		65	51.0kg
EDTW-400R	400	400	350			64.0kg
EDTW-500R	500	500	450		105.0kg	
EDTW-600R	600	600	550		147.0kg	

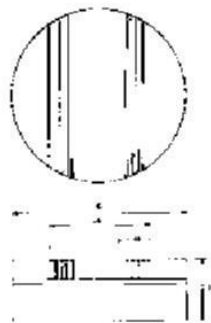
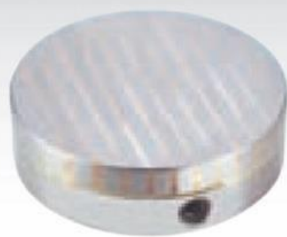


SKÄRPVERKTYG AB

Tel: 031-87 00 50 Fax: 031-87 14 15

PERMANENT MAGNETIC CHUCK (POWERFUL CIRCULAR TYPE)

MODEL:EDMT-R



APPLICATION:

Widely used to hold workpieces for turning on lathes and for grinding on internal cylindrical or rotary grinding machines. Also this chuck can be used on milling machines.

FEATURES:

Made from a permanent magnet with strong magnetism.

25.4mm=1"

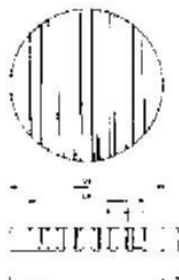
mm

MODEL	DIAMETER	TOP PLATE		POLE PITCH	HEIGHT	WEIGHT
		D1	Le	P	H	
EDMT-125R	125	125	80	11 (2+9)	58	6.2kg
EDMT-160R	160	160	115			9.5kg
EDMT-200R	200	200	155			15.0kg
EDMT-250R	250	250	205	15 (3+12)	63	23.0kg
EDMT-300R	300	300	255			36.0kg
EDMT-360R	360	360	310	16 (4+12)	65	51.0kg
EDMT-400R	400	400	350			64.0kg
EDMT-500R	500	500	450			105.0kg
EDMT-600R	600	600	550			147.0kg

*

PERMANENT MAGNETIC CHUCK (POWERFUL CIRCULAR TYPE)

MODEL:ERMT-R



APPLICATION:

Widely used to hold workpieces for turning on lathes and for grinding on internal cylindrical or rotary grinding machines. Also this chuck can be used on milling machines.

FEATURES:

- 1.Made from a permanent magnet with strong magnetism.
- 2.This type of chuck is effective for workpieces of different thickness.
- 3.Specially designed for steady and high precision applications.

25.4mm=1"

mm

MODEL	DIAMETER	TOP PLATE		POLE PITCH	HEIGHT	WEIGHT
		D1	Le	P	H	
ERMT-125R	125	125	88	14.5 (1.5+3.2+1.5+8.3)	55	4.5 KG
ERMT-160R	160	160	118			7.5 KG
ERMT-200R	200	200	149			12 KG

PERMANENT MAGNETIC CHUCK (THIN AND CIRCULAR TYPE)

MODEL:ERTW-R



APPLICATION:

Widely used to hold workpieces for turning on lathes and for grinding on internal cylindrical or rotary grinding machines.

FEATURES:

- 1.Made from a permanent magnet with strong magnetism.
- 2.The fine-pitched magnetic poles make it ideal for small and thin workpieces.
- 3.Specially designed for steady and high precision applications.

25.4mm=1"

mm

MODEL	DIAMETER	TOP PLATE		POLE PITCH	HEIGHT	WEIGHT
		D1	Le	P	H	
ERTW-100R	100	100	65	1+1.5	45	2.5 KG
ERTW-125R	125	125	66.5			4.5 KG
ERTW-160R	160	160	87.5			6.5 KG
ERTW-200R	200	200	120			10 KG

SKÄRPVERKTYG AB

Tel: 031-87 00 50 Fax: 031-87 14 15

ELECTROMAGNETIC CHUCK (STANDARD TYPE)

MODEL:EET



APPLICATION:

Most suitable for grinding operation. It's the most popular electromagnetic chuck.

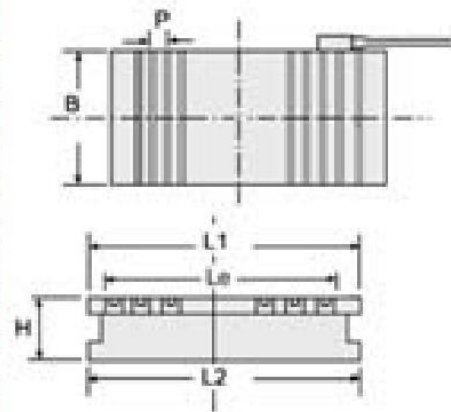
FEATURES

- 1.The hard-soldered top plates and solid bottom plates assure rigidity, precision and durability required for magnetic chucks.
- 2.Our uniquely designed construction and processing method can make face plate construction reduce weight, produce powerful magnetic force as well as make the whole construction and material reach the highest mechanical performance.
- 3.Brass-welded face plate absolutely free from gap.
- 4.Highly acid-proof so as to not be affected by the coolant.
- 5.Consistant temperature within 15 °C and accuracy change = 0.002 at a continuous operation for more than 3 hours.
- 6.More than 1000MΩ of insulation resistance.

25.4mm=1"

mm

MODEL	DIMENSION	CHUCKING FACE			POLE PITCH P	LENGTH L2	HEIGHT H	WEIGHT (kg)	VOLTAGE (V)	CURRENT (A)
		B	L1	Le						
EET-1530	150 × 300	150	300	258	15	300	75	20	DC 90V	0.18
EET-1535	150 × 350		350	288		350		24		0.19
EET-1545	150 × 450		450	408		450		30		0.19
EET-2040	200 × 400	200	400	348	15 (3+12)	400	75	38	DC 90V	0.28
EET-2045	200 × 450		450	408		465		41		0.28
EET-2050	200 × 500		500	438		500		45		0.36
EET-2550	250 × 500	250	500	438	19 (3+16)	500	85	65	DC 90V	0.46
EET-3060	300 × 600	600	528	600		81		0.86		
EET-3070	300 × 700	700	648	700		93		0.81		
EET-3090	300 × 900	300	900	828	19 (3+16)	900	85	125	DC 90V	1.05
EET-4060	400 × 600		600	548		600		130		0.95
EET-4070	400 × 700		700	624		700		151		1.21
EET-4080	400 × 800	400	800	736	19 (3+16)	800	85	174	DC 90V	1.31
EET-40100	400 × 1000		1000	924		1000		221		1.33
EET-50100	500 × 1000		500	1000		924		1000		270
EET-50150	500 × 1500	500	1500	1450	19 (3+16)	1500	85	405	DC 90V	3.37
EET-60100	600 × 1000	600	1000	924		1000		330		2.80
EET-60150	600 × 1500	600	1500	1450		1500		495		2.85
EET-80100	800 × 1000	800	1000	924	19 (3+16)	1000	85	440	DC 90V	3.8



ELECTROMAGNETIC CHUCK (MICRO-PITCH TYPE)

MODEL:EET-W



APPLICATION:

Most suitable for grinding thin work piece.

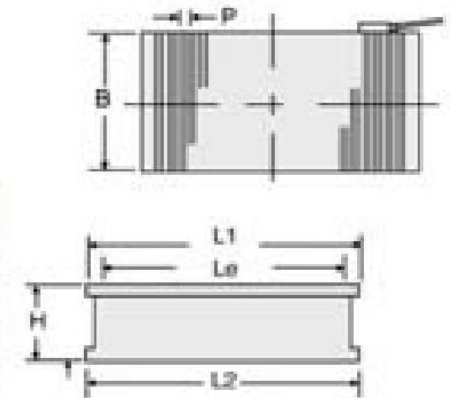
FEATURES

- 1.Equipped with brass-welded face plate absolutely free from gap.
- 2.Brass welding protects face plate from coolant corrosion.
- 3.More than 1000MΩ of insulation resistance.
- 4.Face plate can be used for magnetic chuck block function.

25.4mm=1"

mm

MODEL	DIMENSION	CHUCKING FACE			POLE PITCH P	LENGTH L2	HEIGHT H	WEIGHT (kg)	VOLTAGE (V)	CURRENT (A)
		B	L1	Le						
EET-1530W	150 × 300	150	300	257	4	300	110	33	DC 90V	0.73
EET-1535W	150 × 350		350	304		350		40		0.61
EET-1545W	150 × 450		450	403		450		50		0.98
EET-2040W	200 × 400	200	400	355	4 (1+3)	400	110	63	DC 90V	1.10
EET-2045W	200 × 450		450	403		450		71		1.20
EET-2050W	200 × 500		500	457		500		80		1.40
EET-2550W	250 × 500	250	500	457	4 (1+3)	500	110	112	DC 90V	1.00
EET-3060W	300 × 600	300	600	553		600		150		0.93

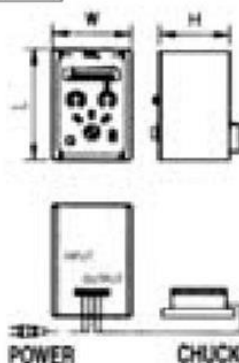


SKÄRPVERKTYG AB

Tel: 031-87 00 50 Fax: 031-87 14 15

CHUCK CONTROLLER (FOR RECTIFY & DEMAGNETIZE)

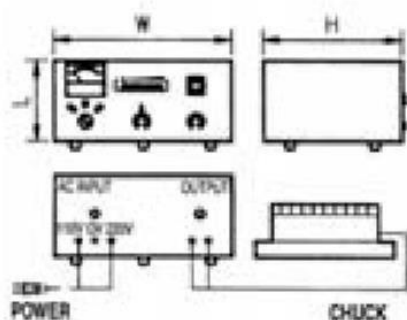
MODEL:ERD-505



FEATURES

- 1.Suitable for standard type of electric magnetic chucks.
- 2.With current capacity of 5A; demagnetizing time is 6-15 seconds.
- 3.Precisely adjust the magnetic force of electric magnetic chucks and indicate LED voltage.
- 4.Suitable for any kind of electric magnetic chucks.

**MODEL:ERD-510
ERD-515**



FEATURES

- 1.Suitable for standard type of electric magnetic chucks.
- 2.With current capacity of 10A and 15A; demagnetizing time is 6-15 seconds.
- 3.Precisely adjust the magnetic force of electric magnetic chucks and indicate LED voltage and current..
- 4.Suitable for any kind of electric magnetic chucks.

mm

MODEL	INPUT VOLTAGE (SINGLE PHASE)	OUTPUT		DIMENSION			NET WEIGHT
		VOLTAGE	CURRENT	L	W	H	
ERD-505	AC 110V/220V	DC 0-100V	5A	200	137	122	3.5 kg
ERD-510	AC 110/220/380 415/440V	DC 0-120V	10A	150	330	260	17 kg
ERD-515	AC 220/380/415/440V	DC 0-120V	15A	150	330	260	20 kg

SKÄRPVERKTYG AB

Tel: 031-87 00 50 Fax: 031-87 14 15

PERMANENT MAGNETIC CHUCK

MODEL:ERTW-SA



SINE PLATE WITH PERMANENT MICROPITCH MAGNETIC CHUCK (PRECISION TYPE)

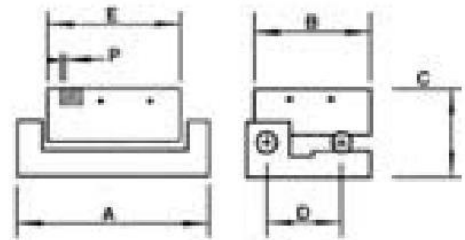
FEATURES

- 1.A positive locking device is mounted on the base.
- 2.This device provides positive locking at any angle without distortion.
- 3.Precise angle setting is obtained with gauge block.
- 4.Constructed of hardened alloy tool steel.
- 5.Special feature with micropitch magnetic chuck, can fix tiny parts firmly on the chuck.
- 6.With high accuracy.

25.4mm=1"

mm

MODEL	A	B	C	D	E	P	ANGLE	N.W.
ERTW-1018SA	225	100	82	75	175			11.5 kg
ERTW-1515SA	200	150	82	100	150	2.5 (1+1.5)	0°-60°	15 kg
ERTW-1530SA	350	150	87	100	300			28 kg



SKÄRPVERKTYG AB

Tel: 031-87 00 50 Fax: 031-87 14 15

PERMANENT MAGNETIC CHUCK

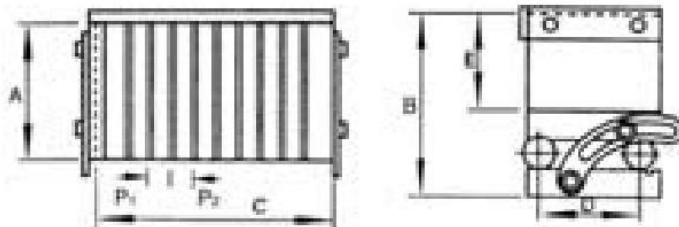
MODEL:EMT-S



SINE PLATE WITH PERMANENT MAGNETIC CHUCK (ECONOMY TYPE)

FEATURES

- 1.A positive locking device is mounted on the base.
- 2.This device provides positive locking at any angle without distortion.
- 3.Precise angle setting is obtained with gauge block.
- 4.Constructed of hardened alloy tool steel.



25.4mm=1"

mm

MODEL	A	B	C	D	E	P1	P2	ANGLE	N.W.
EMT-1018S	100	102	175	75	40				11 kg
EMT-1515S	150	102	150	100	40	6.5 (1.5+5)	7.5 (1.5+6)	0° -60°	15 kg
EMT-1530S	150	102	300	100	40				28kg

PERMANENT MAGNETIC CHUCK

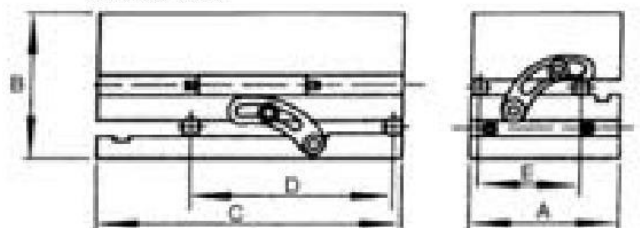
MODEL:EMT-SD



DOUBLE WAY SINE PLATE WITH PERMANENT MAGNETIC CHUCK (ECONOMY TYPE)

FEATURES

- 1.A positive locking device is mounted on the base.
- 2.This device provides positive locking at any angle without distortion.
- 3.Precise angle setting is obtained with gauge block.
- 4.Constructed of hardened alloy tool steel.
- 5.Double way sine plate, can be grind two way angle at same time.



25.4mm=1"

mm

MODEL	A	B	C	D	E	P1	P2	ANGLE	N.W.
EMT-1018SD	100	142	175	100	75				15.5 kg
EMT-1515SD	150	142	150	100	100	6.5 (1.5+5)	7.5 (1.5+6)	0° -60°	19.5 kg
EMT-1530SD	150	142	300	200	100				37.5 kg

SKÄRPVERKTYG AB

Tel: 031-87 00 50 Fax: 031-87 14 15

PERMANENT MAGNETIC CHUCK

MODEL:ERTW-S



SINE PLATE WITH PERMANENT MICROPITCH MAGNETIC CHUCK (ECONOMY TYPE)

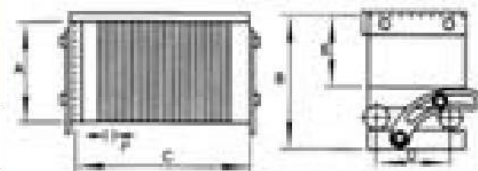
FEATURES

- 1.A positive locking device is mounted on the base.
- 2.This device provides positive locking at any angle without distortion.
- 3.Precise angle setting is obtained with gauge block.
- 4.Constructed of hardened alloy tool steel.
- 5.Special feature with micropitch magnetic chuck, can fix tiny parts firmly on the chuck.

25.4mm=1"

mm

MODEL	A	B	C	D	E	P	ANGLE	N.W.
ERTW-1018S	100	82	175	75	40			10 kg
ERTW-1515S	150	82	150	100	40	2.5 (1+1.5)	0°-60°	12 kg
ERTW-1530S	150	82	300	100	40			25.4 kg



PERMANENT MAGNETIC CHUCK

MODEL:ERTW-SD



DOUBLE WAY SINE PLATE WITH PERMANENT MICROPITCH MAGNETIC CHUCK (ECONOMY TYPE)

FEATURES

- 1.A positive locking device is mounted on the base.
- 2.This device provides positive locking at any angle without distortion.
- 3.Precise angle setting is obtained with gauge block.
- 4.Constructed of hardened alloy tool steel.
- 5.Special feature with micropitch magnetic chuck, can fix tiny parts firmly on the chuck.
- 6.Double way sine plate, can be grind two way angle at same time.

25.4mm=1"

mm

MODEL	A	B	C	D	E	P	ANGLE	N.W.
ERTW-1018SD	100	122	175	100	75			14 kg
ERTW-1515SD	150	122	150	100	100	2.5 (1+1.5)	0°-60°	18 kg
ERTW-1530SD	150	122	300	200	100			35 kg



SKÄRPVERKTYG AB

Tel: 031-87 00 50 Fax: 031-87 14 15

ERGO-BALL

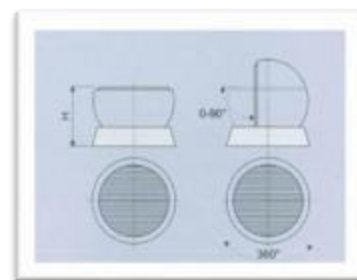
Ergonomisk uppspänning



- Finns i storlek 50-160mm
- Tillverkad i aluminium
- Går att tippa i 90 grader och rotera i 360 grader
- Ergonomisk

Produktinformation

Art.nr	Ø (mm)	Spännkraft(kg)	Yttermått(mm)	Vikt(kg)
3001005	50	80	79	1
3001008	80	80	128	4
3001010	100	100	158	7
3001013	130	100	188	11
3001016	160	100	218	17



SKÄRPVERKTYG AB

Tel: 031-87 00 50 Fax: 031-87 14 15

Rostfritt magnetblock



Magnetblock SPM 2-NIRO

Finns i två storlekar

Uppspänningsyta	115x64x64 mm
	135x64x64 mm

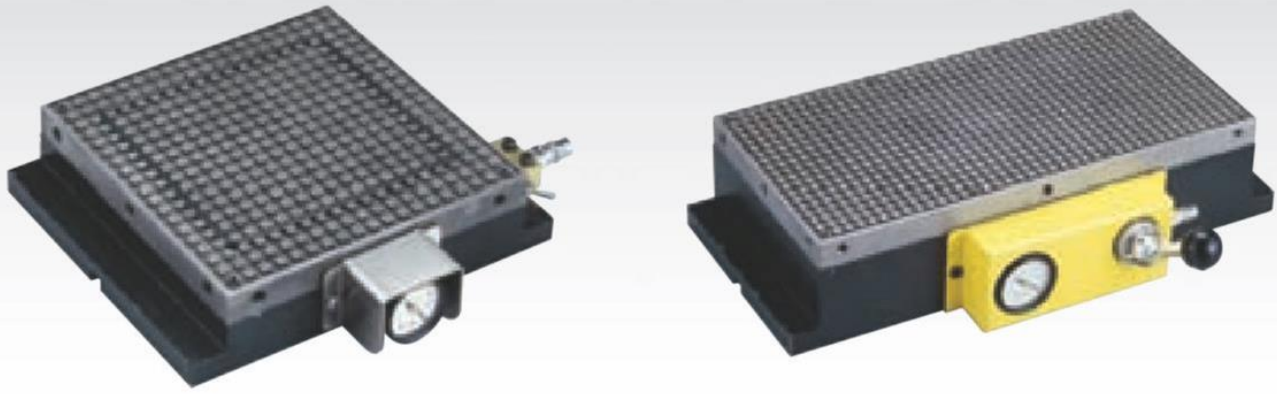
- Uppspänningsmöjligheter på 4 sidor
- Vredet tätat med O-ring
- Tätpoligt med lågt magnetfält för att inte störa gnistprocessen
- Perfekt för uppspänning av tunna detaljer

SKÄRPVERKTYG AB

Tel: 031-87 00 50 Fax: 031-87 14 15

VACUUM CHUCK

MODEL:EGVC



FEATURES:

- 1.The Vacuum Chuck works through compressor, more easy and convenient to operate than past vacuum chuck works through pump.
- 2.New design. Had improved many times as parts simplify, so less break down and easy to maintain.

APPLICATIONS:

- 1.Suitable for light cutting non-magnetic material such as light metal of aluminum, brass, copper, alloy, stainless...etc and plastic, ceramic, glass, stone, wood...etc smooth workpiece.
- 2.Workpiece of super thin which can not clamp by other way.

*Material: S50C

*Parallelism: $\pm 0.01\text{mm}$

*Product: Precision ground

*Plate: With harden treatment

*Character: Circuit of air-in concealed.

*Auxiliary parts: Silicone $\phi 4\text{mm}$ x 4meters

Clamping Force:

$$F=A \times P/700$$

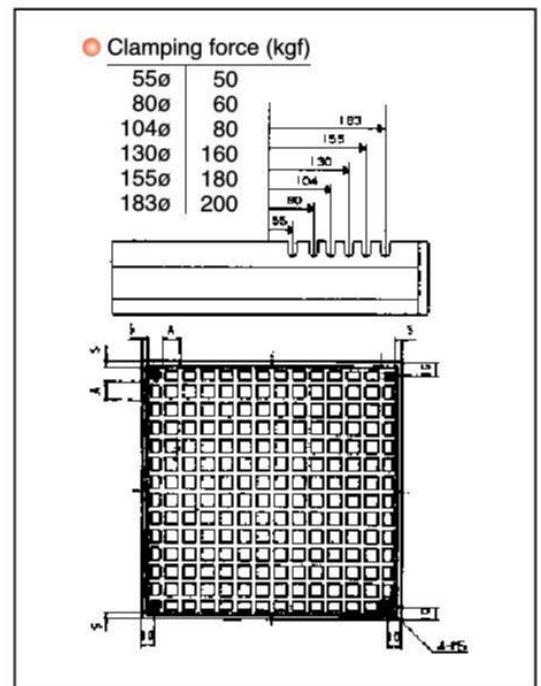
F:Clamping force (kgf)

A:Inhale area (cm^2)

P:Air pressure (mmHg)

mm

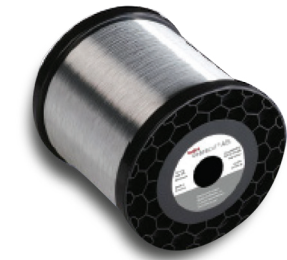
MODEL	DIMENSION	GROOVES	PITCH	N.W
EGVC-1515	150x150	4mm	6 by 6mm	9.2kg
EGVC-1530	150x300	4mm	6 by 6mm	13.7kg
EGVC-2020	200x200	4mm	6 by 6mm	12.1kg
EGVC-2040	200x400	4mm	6 by 6mm	22.2kg
EGVC-2525	250x250	4mm	6 by 6mm	16.4kg
EGVC-2550	250x500	4mm	6 by 6mm	30.6kg
EGVC-3030	300x300	4mm	6 by 6mm	23.4kg
EGVC-3045	300x450	4mm	6 by 6mm	37.0kg
EGVC-3060	300x600	4mm	6 by 6mm	48.6kg
EGVC-3075	300x750	4mm	6 by 6mm	50.4kg
EGVC-4040	400x400	4mm	6 by 6mm	42.5kg
EGVC-4060	400x600	4mm	6 by 6mm	62.7kg
EGVC-4080	400x800	4mm	6 by 6mm	72.9kg
EGVC-40100	400x1000	4mm	6 by 6mm	103.0kg
EGVC-5050	500x500	4mm	6 by 6mm	59.2kg
EGVC-5075	500x750	4mm	6 by 6mm	87.8kg
EGVC-50100	500x1000	4mm	6 by 6mm	116.4kg
EGVC-50125	500x1250	4mm	6 by 6mm	145.0kg
EGVC-6060	600x600	4mm	6 by 6mm	78.6kg
EGVC-6090	600x900	4mm	6 by 6mm	116.0kg



SKÄRPVERKTYG AB

Tel: 031-87 00 50 Fax: 031-87 14 15

Se våra förmånliga
månadserbudanden
på skarpverktyg.se!



Skärpverktyg är
marknadsledande i
Sverige inom gnisttråd,
slitdelar och tillbehör till
trädgnistmaskiner.

Hög kvalitet
Korta Leveranstider
Brett sortiment

VÅRA LEVERANTÖRER

bedra
intelligent wires

swiss hemo

HOMGE

CASTLE-TECH

ECE
EARTH-CHAIN
Power that works.

KOHN
Spannwerkzeuge GmbH

valorbe
swiss

MANN+HUMMEL

Gesswein
The Right Tools Since 1914

HIRSCHMANN

Mitutoyo



SKÄRPVERKTYG AB

📍 Kråketorpsgatan 10, 43153 MÖLNDAL

☎ 031-87 00 50

📠 Fax 031-87 14 15

✉ info@skarpverktyg.se

🌐 www.skarpverktyg.se

© 2018 All Rights Reserved.